

SOCIETY

INTERIORS & DESIGNTM

www.societyinteriorsdesign.com

Kembhavi Architecture Foundation's Emphasis on Contextually Relevant Green Design

Vivek P P, Hartmut Wurster, Rajesh Patel, Kunal and Khushboo Khandelwal, Rahul Das Menon and Ojas Chaudhari, Sarabjit Singh, Ranjeet Sharma and Kuntal Vyas Aggarwal.

LUXURY FOR EVERYONE



A wide collection of designer Art Basins



Top of the line Intelligent Water Closet with built-in smart technology



Sophisticated design and robust engineering come together to create the Plumber Bathware range. Now it's your turn to transform your functional space into a personal wellness oasis.

LIFETIME WARRANTY ON FAUCETS*

PLUMBER BATHWARE

SANITARYWARE • FAUCETS • SHOWERS • ACCESSORIES

*Visit our website for details.

AND YOU THOUGHT WE ARE ONLY INTO TILES?

Turn your bathrooms into a work of art with Johnson Bathrooms. A leading brand synonymous with tiling solutions and a legacy of 65 years, Johnson brings to you a wide range of sanitaryware, faucets and bath accessories. We have a select line of sanitaryware that comes with a unique germ-free feature for better hygiene. So, for a bathroom makeover, treat it special, with Johnson.

 **JOHNSON**
BATHROOMS
Sanitaryware | Faucets | Tiles





Science@work



Prevents Dust Buildup



Sound Insulation



Keeps out Rain*



Thermal Insulation

Nationwide Footprint Across 350+ Cities

Call: 1800 102 9880 (Toll Free) WhatsApp 74286 91568

Email: response@fenesta.com | Visit: www.fenesta.com

*T&C Apply.

Keep the Outside Outside Forever

The multi-chambered profiles and fusion welded joints improve overall sealing and insulate windows to keep icy winds out of your home, keeping the inside warm and comfortable.

Fenesta 
Better by Design

India's No.1 Windows & Doors Brand



uPVC | Aluminium | Solid Panel Doors | Façades

COLOUR PALETTE



SOCIETY
**INTERIORS
&
DESIGN**

www.societyinteriorsdesign.com

Publisher: Magnate Publishing Private Limited

Consulting Editor: Swati Balgi

Contributer: Priya Prabhu

Graphic Designer: Syed Zaid Inamdar

Business Heads

National, West Zone: Sunil Khavnekar +91 9820303096 Preeti Nair +91 9892746767

North Zone: Ravi Roushon +91 9818198689

South Zone: Rekha Kambhoj +91 9845587253

East Zone: Ashim Banik +91 9830056642

Gujarat: Madan Menon +91 9898002522



Contents

Cover Story

The transformative spaces designed by Kembhavi Architecture Foundation leave an indelible mark as cutting-edge designs **10**

Architecture

Swasthi, envisioned by De Earth Architects, fuses Kerala's conventional architectural heritage with modern innovation **24**

Toy Blocks, a playschool in Ahmedabad designed by Blocher Partners India is a dynamic design redefining the concepts of Architecture in Early Education. **32**

Lifestyle

The small apartment in Mumbai, designed by Rajesh Patel seamlessly blends simplicity, class, and contemporary design. **40**

Kunal and Khushboo Khandelwal's path-breaking approach creates a unique identity for this Mumbai residence. **44**

Anusmaranam - The Reminiscence" stands as a testament to studio TAB's design dedication. **52**

Ar. Sarabjit Singh has designed an attractive Villa decked with bespoke finishes, selective artworks, and an earthy material palette. **60**

Furnishing Secrets

Browse through these aesthetically pleasing carpets that are sure to accentuate your spaces. **68**

Expert View

Ranjeet Sharma, President and CEO, 3A Composites India Private Limited speaks about the importance to scout for appropriate fire prevention materials **72**

Workstation

Resaiki Interiors and Architecture Design Studio designs a positive workstation for KrishiRasayan Group. **78**

Product Section

The latest round-up of products, furniture and furnishing. **84**

Society Interiors & Design is published once every month by Magnate Publishing Private Limited, 501, La-creme CHS Ltd, Kondivita VLG, MIDC, Andheri(e), Near Akruiti Trade Center, Mumbai, Maharashtra, India, 400059. Tel No: +91-993-0061-674. Editorial texts and illustrations are the copyright of the publishers of this magazine. No one may reproduce any material before permission is obtained in writing.

All disputes are subject to the exclusive jurisdiction of competent courts and forums in Mumbai (India) only.

2022 Copyright Magnate Publishing Private Limited.

Please address all your advertising, subscriptions and trade enquiries for to: Magnate Publishing Private Limited, 501, La-creme CHS Ltd, Kondivita VLG, MIDC, Andheri(e), Near Akruiti Trade Center, Mumbai, Maharashtra, India, 400059. Tel No: +91-993-0061-674. Email: info@magnatepublishing.in

MAGNATE PUBLISHING IS NOT RESPONSIBLE FOR ANY CLAIM MADE BY THE ADVERTISER



ABID

INTERIORS 2024

International Architecture and Interior Design Expo

MILAN MELA - KOLKATA

2.3.4.5 FEBRUARY

Few Stalls Available

Contact: +91 96745 12222

Follow Us On:    /abidinteriors

Visit Our Website: www.abidinteriors.com

Email: abid.interiors@gmail.com



Editor's Note

In our country, a rich reservoir of talent thrives, and this is distinctly evident within the field of architecture. One such multi-talented architecture firm is Kembhavi Architecture Foundation that stands as a vanguard, crafting transformative spaces that etch a lasting impression through their cutting-edge designs. Read our cover story to admire and learn from their design. Another architectural marvel, Swasthi, envisioned by De Earth Architects, ingeniously intertwines Kerala's traditional architectural heritage with contemporary ingenuity.

We also have Blocher Partners who has designed the masterpiece Toy Blocks in Ahmedabad that redefines early education spaces with its dynamic design, breathing new life into the concept of architecture within educational settings.

Shifting focus to lifestyle and residential design, Ar. Rajesh Patel's skillful approach converts a compact Mumbai apartment into a stunning space; Kunal and Khushboo Khandelwal take a pioneering approach, fashioning an identity for a Mumbai residence through their innovative layered house design; Studio TAB's dedication to design excellence resonates vividly in "Anusmaranam - The Reminiscence," a testament to their unwavering commitment to intricate design.

We also feature Ar. Sarabjit Singh's exquisitely designed villa, adorned with bespoke finishes, selective artworks, and a palette grounded in earthy materials, exemplifies a blend of opulence and organic charm.

Shifting gears to our section Furnishing Secrets we spotlight on innovative carpets. In our section Expert Preview Ranjeet Sharma, President and CEO of 3A Composites India Private Limited, sheds light on the paramount importance of sourcing fire prevention materials, highlighting their role in ensuring safety in various architectural projects.

Wrapping up with a glimpse into the realm of workspace design, Resaiki Interiors and Architecture Design Studio unveils their creation—a positively charged workstation tailored for Krishi Rasayan Group, setting the stage for productivity and creativity to flourish.

Enjoy reading and get back to us with your feedback.

Regards,

-Swati Balgi



Your Personal “Luxurious Home Lift”



Jet Elevator
Italian Home Lifts

Bungalows | Row House | Duplex Flat | Pent House | Showrooms | Resorts & Hotels

Attractive Looks, Requires Small Place, Single Phase 230V,
Auto & Manual Door, Pit 80mm, Head Room : 2300mm,
No Machine Room, Noiseless & Easy to install.

Head Office: 207- Gold Crest Business Park, L. B. S. Marg, Ghatkopar W., Mumbai 400 086, India.

Tel.: 022 -25003444 / 441 **Mob. No.:** +91 82862 65555 **email:** sales@jetelevator.com

www.jetelevator.com

Society Interiors & Design - Nover



Human-Centric and Multi-dimensional Designs

Kembhavi Architecture Foundation designs transformative spaces that inspire and leave an indelible mark as trendsetting designs.

Kembhavi Architecture Foundation stands as a pinnacle of diversity and success in India's architectural and design landscape, revered for its multifaceted expertise and specialised services. Established in 1972 by Sharad and Nalini Kembhavi, the foundation is now steered by six partners, including Indrajit Kembhavi, Nita Kembhavi, Parth Kembhavi, and Sowmya Kembhavi.

This esteemed consulting firm offers a comprehensive spectrum of services, encompassing architectural design, interior design, project management, and innovative solutions for Green Building Habitats. With well-equipped offices in Hubli and Bengaluru, supported by a dedicated team of over 120 professionals, Kembhavi Architecture Foundation has served more than 2000 clients.

Their portfolio spans a wide array of projects across diverse sectors within the construction industry, ranging from malls, hotels, corporate offices, and transport terminals to healthcare facilities, cultural centers, townships, and private residences. Noteworthy clients include Tata Housing, Puravankara, Prestige Group, Ozone, Century Group, Akshaya Pvt. Ltd., Landmark Construction, General Motors, Indian Railways, HUDCO, KHB, Manikchand Group, and SBIOA, among others.



The firm's exceptional work has garnered numerous accolades and awards. Recently, KAF was honored as one of India's top 30 firms by Forbes. They have been bestowed with numerous awards over the years. This recognition underscores Kembhavi Architecture Foundation's commitment to excellence and innovation within the architectural and design sphere.

Engaging in a dialogue with Society Interiors and Design, Indrajit Kembhavi and Nita Kembhavi delve into their perspectives on Architecture and Design, Shedding light on their upcoming projects.

What are the thoughts that cross your mind when you take on new projects?

Every project is unique in function, context, climate, economics, and many other parameters. Hence the priority for as before engaging in any project is to understand the parametric comprehensively to arrive at the right fit of responsibility and function before deep diving into the design process

Do you find it difficult to consistently develop innovative designs for such diverse needs?

It's in fact exciting to work on a diverse spectrum of projects. It is extremely pertinent to have a strong knowledge/research base in understanding the working complexity of each project based on the technical parameters required for the project.

What are your best personal experiences while working with a diverse national and international clientele?

One thing we understood is that no two clients are alike and every client has their own unique character which indeed is a pleasure since design is essentially human-centric and catering to varied measures helping us conceive design in a multitude of ways.

What defines your work?

Our work can be defined as "contextually relevant green design"

What type of projects challenge you the most?

Projects of complex typologies including mixed development projects, cultural projects, transport hubs etc. are extremely challenging as they require complex interpretations of varied parameters infusing human needs/aspirations/technology/ systems & processes/economic, etc. in an efficient yet creative mould.



Having won so many national and international awards is there something more coveted that you aspire for?

It's a privilege to get recognition for the body of work and for the effort put in by the whole team. Our aspiration is to try and be better and more efficient each day and deliver the best to our clients.

Do you think we're at par with the West regarding architecture and design?

Absolutely Indian architects are coming out with phenomenal designs. The challenge in India is that budgets for projects are much lower than those in the west, also construction expertise and quality are lacking, these constraints prevent a lot of architects from flowing freely and experimenting.

What are your forthcoming projects?

We have a lot of exciting projects in the pipeline including a very experiential retail hub in Cochin International Airport, Multi-storey super luxury co- living in Bengaluru, townships across cities, and some interesting institutions.

How has technology influenced design?

Technology is radically impacting design, from BIM to parametric software to AI. Architects and designers are now enabled to conceive, visualize, and optimize design.

What is your take on sustainable architecture?

Sustainable architecture is definitely the need of the hour, the human race has put a lot of load on the Ecosystem, causing serious damage to our eco sphere and the construction sector is a huge contributor to the overload. Hence, it's pertinent that every project small or large be sustainable and green.

Your message to the budding and aspiring architects from India.

India is in an exciting phase and demand for varied scale and project typology is expanding exponentially, this is creating huge opportunities for designers and architects and the space is getting very exciting. Hence our advice to youngsters is to upskill beyond basic university learning, drawing in knowledge of new-age technologies and trends and be updated with evolving times to remain relevant and competitive.

From the vast and diverse portfolio, we showcase a few select projects designed by the multidimensional firms.

LANDMARK VERTICA

The site, nestled adjacent to the revered 1,000 Lights Mosque in Chennai, holds a profound significance in its proximity. To honor its legacy and seamlessly integrate with the cultural narrative, the architectural design of the building incorporates four towering pinnacles, drawing inspiration from the mosque's four minarets.

Envisioned as a tribute to the mosque's symbolic "1,000 lights," the structure incorporates an abundance of meticulously crafted lighting elements across its façade and interior spaces. This homage further amplifies the spiritual resonance echoing from the mosque's luminous heritage.

With an unwavering commitment to cultural authenticity, the building is meticulously crafted, embracing the essence of the "Chola" tradition deeply ingrained in Chennai's historical fabric. The design meticulously intertwines intricate details and artistic expressions inspired by the rich artistic heritage of the Chola dynasty.

Encompassing a sprawling area of 3,50,000 sq ft, this architectural marvel stands as a testament to cultural reverence, marrying tradition with contemporary design sensibilities.





BHIMA CORPORATE OFFICE

The corporate headquarters of a leading Indian jewelry retail brand draws inspiration from the captivating form of an uncut diamond, evoking elegance and prestige in its architectural design.

The utilization of materials exudes opulence and sophistication, carefully balancing lavishness with a sense of moderation and discernment. The deliberate choice of materials reflects an exquisite taste and a commitment to refined aesthetics.

The stylistic approach of the building embodies a harmonious blend between Neo-modernism and the timeless allure of Art Deco. This fusion of architectural styles creates a mesmerizing visual language that seamlessly marries contemporary innovation with the grandeur of an era characterized by luxurious ornamentation and geometric motifs.

Every facet of the design, from the structure's silhouette to its intricate detailing, reflects a meticulous curation of elements that celebrate the brand's heritage and commitment to excellence. The resulting architectural masterpiece stands as a testament to sophistication, embodying the brand's ethos through a synthesis of modernity and classic allure.





WINDS OF CHANGE - CLUBHOUSE, Trivandrum, Kerala

The "Winds of Change" club stands as a meticulously crafted haven within a sprawling 14-acre gated villa community in Trivandrum, strategically designed to serve as a nexus for relaxation, camaraderie, entertainment, and play.

Embodying the essence of Kerala's lush landscapes and inherent refinement, this club is a testament to the subtle elegance that resonates with its surroundings. Its conceptualization revolves around seamlessly blending contemporary elements with the timeless sophistication inherent in the region's ethos.

Functionality takes center stage in this space, fostering a sense of togetherness through meticulously planned activities that enhance the overall ambiance. Positioned as a signature entryway, the clubhouse entices with its structural allure, creating a visually engaging introduction to the entire layout.

In perfect harmony with the scenic beauty, the club's design not only coalesces with nature but also evolves alongside it, enriching the users' experience. Encouraging interactions and fostering a sense of community, the environment here is crafted to promote socialization among residents.

Angular geometrics crafted with steel, concrete, and glass define the building's form, seamlessly merging with the landscape and blurring the boundaries between indoors and outdoors. The architectural layout employs subtle yet impactful planning, adding a touch of sculptural finesse while maintaining transparency throughout.

Every aspect, from the understated form to the thoughtful infusion of art and craft, contributes to infusing a serene yet vibrant ambiance into the space. This project harmonizes minimalism, materiality, and spatial design with nature, ensuring not only aesthetic finesse but also functionality and efficiency for its users.

By offering purpose-driven experiences that positively influence user performance, the design serves as a sanctuary to unwind, significantly enhancing the quality of life within the community it serves.





THE ZONE AT KOCHI AIRPORT

Situated at the Kochi International Airport, the Transit Hotel stands as the premier gateway to Kerala, embodying the essence of "God's Own Country." This architectural marvel is more than just a functional space; it's a meticulously crafted embodiment of Kerala's charm and tranquility. Comprising an array of amenities such as guest suites, lounges, business centers, and restaurants, the design concept revolves around a central water body. Inspired by the serene backwaters of Kerala, this feature acts as the heart of the establishment. The entire layout is ingeniously woven around this aquatic centerpiece, fostering an organic and harmonious atmosphere. Unlike conventional transit lounges that prioritize clinical efficiency, the Transit Hotel breaks free from this mold. It aims to recreate a leisurely and inviting ambiance, allowing travelers to unwind and immerse themselves in the beauty of Kerala. The architecture itself echoes this sentiment; its fluid forms and contours mirror the natural flow of water, fostering a sense of ease and relaxation. Moreover, the choice of warm materials in the construction palette adds to the ambiance, evoking a sense of comfort and tranquility. This deliberate selection of elements appeals to the senses, ensuring that every visitor experiences a calming and welcoming environment amidst the bustling atmosphere of an airport.





CULTURAL CENTER FOR MATA AMRITANANDAMAYI AT MAHABALIPURAM.

The design concept for the Cultural Center for Mata Amritanandamayi at Mahabalipuram emerged from an in-depth exploration of "Sanatan Dharma," the Vedas, and the profound teachings of Mata Amritanandamayi. This conceptualization was the result of a design competition entry, driven by a comprehensive study of these foundational elements.

Derived from the essence of "Amrita," symbolizing the nectar of immortality, the design draws inspiration from the mythical narrative of "Samudra Manthan" – the stirring of the ocean by the Devas and the Asuras. The envisioned form of the structure reflects the dramatic churn of the ocean, visualised as dynamic tidal waves taking shape.

At the heart of this architectural marvel stands the central "Lotus petal," soaring to a height of 108 meters and crafted from copper, symbolizing the celestial serpent, Vasuki. This monumental centerpiece embodies a convergence of spiritual symbolism and architectural grandeur.

This design seamlessly melds elements of the past and the future, presenting an exceptionally futuristic building form. It rests upon a decorative plinth that pays homage to the architectural legacy of Mahabalipuram, ensuring a cultural continuum. This synthesis evokes the ancient wisdom and heritage of the discipline while portraying its enduring journey through time and space.





TWIN TOWER

"The Twin Tower project was commissioned by the government to maximize the commercial potential of their site by constructing cutting-edge office spaces. The goal was to create a financially viable model that would cater to the government's own needs while also accommodating tenants," says Indrajit Kembhavi.

Inspired by the elegant structure of flower petals, the design envisioned two towers soaring to a height of 50 stories each. This architectural choice aimed to harmonize efficiency with aesthetics, ensuring a striking visual appeal alongside functional effectiveness.

The project's conception placed a strong emphasis on integrating state-of-the-art technology, achieving carbon-neutral efficiency, and adopting a futuristic facade. This design philosophy aimed to encapsulate the city's technological prowess, symbolizing progress and innovation in its architectural form.





YAGACHI - CAPE OF JOY

Yagachi – Cape of Joy is a sprawling project spanning across 120 acres, comprising resort facilities and time-share villas. Nestled amidst stunning landscapes of lush coffee plantations, the site boasts unparalleled water views along the picturesque reservoir. Envisioned with a contemporary aesthetic, the project meticulously preserves the essence and charm of the Malnad region in Karnataka. Embracing the local architectural elements such as quaint sloped roofs, indigenous stones, and an earthy ambiance, the design pays homage to the region's distinctive character.

Crafted to offer the epitome of luxury, the project elegantly combines opulence with a tranquil setting. It seeks to provide guests and residents with an unparalleled experience, where luxury seamlessly intertwines with the serene natural surroundings.

Overall, this firm has designed landmark structures over the years and there are a few more in the pipeline...so let's wait and watch.

Text: Swati Balgi

Photographs: Courtesy the Architecture Firm

Reimagining Kerala's Vernacular Architecture for Modern Living



Swasthi, envisioned by De Earth Architects, harmoniously merges Kerala's traditional architectural heritage with contemporary innovation, redefining modern residential living.



Nestled in the lush landscapes of Kerala lies Swasthi, designed by De Earth Architects, this architectural masterpiece tells a story of how Kerala's vernacular architecture has been reimagined for contemporary living. This residential project fuses traditional with innovation.

Located in Thalassery, Kannur and spread over an area of 4,835 sq.ft. Swasthi's innovative approach to traditional architecture is a perfect example of a creative synthesis. The locally sourced materials and traditional building techniques, such as the clay tile-laid pitched roofs and exposed laterite walls; work in perfect harmony with the sleek lines and minimalist aesthetics of the modern design. The result is a space that is both ancient and new as if the soul of the past is shining through a contemporary prism.

The site's location adjacent to the client's ancestral home lends Swasthi an air of familiarity and timelessness and it is this very presence that an axis has been designed from the direction of the old mansion. The presence of the main road in the south and the natural contour of the site made way for a basement parking into a stepped pathway adorned with landscape leading up to the entry, where a swing overlooks the lush greenery.

"Where greys and whites blend with the natural textures of reddish brown, channels of green seem to spurt through flora of different kinds. Cantilevered eaves to offer protection from the might of the monsoon downpour and the raw textures of exposed concrete and laterite finished framed through compositions of a humble and elegant order, Swasthi is a space that is both timeless and contemporary, a perfect fusion of tradition and innovation." explains Ar Vivek P P.

The residence is planned in such a way that the private spaces are elevated to the first floor, keeping the guest bedroom as well as the other common spaces on the ground floor.

Stepping inside Swasthi is like stepping into an enchanted reality. The soaring ceilings, Jaisalmer floors, and generous windows create an ethereal, light-filled space that seems to glow from within. The spaces are designed with an eye towards natural light, airflow, and a seamless blending of indoor and outdoor spaces, inviting you to feel the pulse of nature.





Upon entering the living spaces, an orchestrated transition greets guests, seamlessly guiding them through each area. From the rustic double-height living room, adorned with a fusion of furniture inspired by the past and contemporary design, the elegance of the Jaisalmer flooring leads one's gaze towards the exquisite dining space, a masterpiece in its own right. Banked by courtyards on either side, each one narrates a different story during times of the day, the openness. The play of volumes and colours, imbibe a sense of dynamism amidst the tranquillity, much enjoyed by the client.

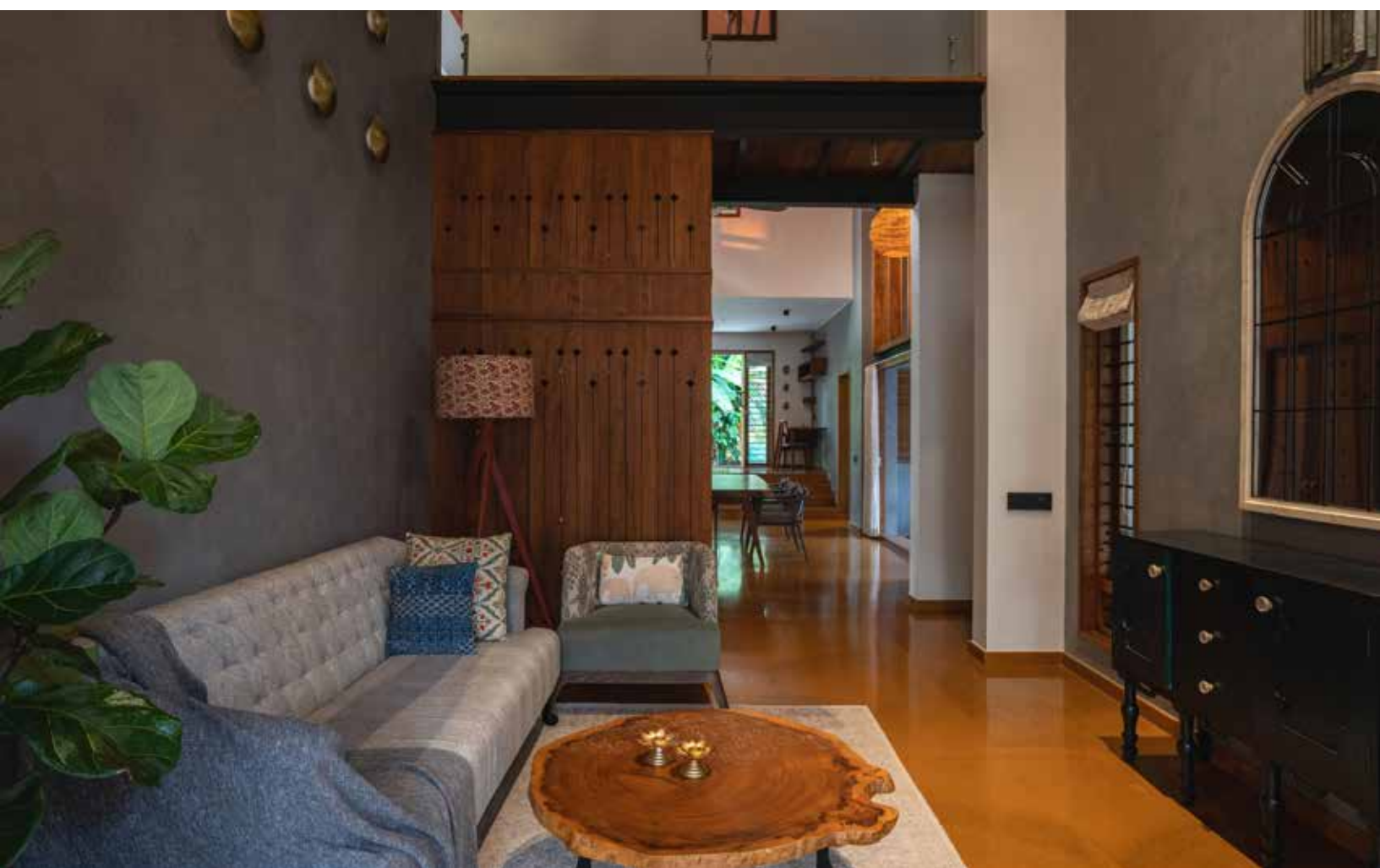
The architects have skillfully woven the local heritage and natural beauty into the design, creating a space that is both contemporary and grounded in tradition.

While one courtyard fuses the language of mosaic flooring, rather scaled up offering a different experience with the yellow oxide finished seating across the other side, the landscape seems to inexplicably blend everything.

The courtyards are a tribute to the blissful monsoons and the tropical nature of the site, designed in ways to experience the downpour, blissfully, poetically, and sometimes with youthful exuberance. Open, dreamy, and luscious, the other courtyard welcomes the rains from the opening up top as well as a brass rain gutter that channels the water towards the landscape that sits on neatly crafted cobblestone paving circled around pebbles. The idea of connecting the core living spaces to the deck, courtyards, and verandahs is inspired by the site conditions and its nature.

Further down the lane, the kitchen places itself close to that of the ancestral home, to have the fragrances of delicacies and words keep their strings attached.







Upon stepping up into the first floor, one would cease to notice the bedroom windows looking out into the courtyards through its openings. The bedrooms look out through its bay windows and openings covered with different screens to open the plethora of its magnificent views.

The rustic and vernacular, yet modern clean lines that set the character of the bedroom are evident through the amalgamation of metal on wood, the screens on windows, and the joyful colours of the fabric.

The son's bedroom especially boasts tailor-made customization that ended up in a bookshelf that lets one walk on it as a stairway leading into an attic covered by the magnificence of clay tiles on steel rafters sported by under tiles. The design in general plays with the volumes of spaces to keep the place alive through its language of architecture.

"Swasthi is a celebration of Kerala's rich architectural heritage and a testament to the power of design to inspire and captivate. It is a place where the past and the present come together in perfect harmony, creating a space that is timeless and enduring", says Ar.Vivek P P.

Swasthi is more than just a residential project. It is a testament to the power of architecture to evoke emotion and transport us to another time and place. It is a place where the past and the present come together in perfect harmony, creating a space that is both timeless and contemporary.

Project Details:

Architect team: Ar Vivek P P, Ar Nishan M, Ar Sanak Surendran, Ar Sukanya, Ar Reenu Jose, Jamsheed, Sarath

Lighting & Furniture: Kiara, Magari

Carpentry: Wood Grains

Structural Er. Chithra

Contractors: Malabar Infrastructure, Thalassery

Glass: Saint Gobain

Concrete: Ultratec

Sanitary ware/Fittings: Jaquar

Flooring: Jaisalmer, Kota, Black granite

Furnishing: Instyle Creations

Furniture: Kiara, Magari

Air Conditioning: Deikin

Kitchen: Ultimate Kitchen

Lighting: Kiara

Paint: Asian Paints

Art/Artifacts: Wudapple, Kiara

Automation: Prince Enterprises

Terracotta Jali: Nuvocota

SMARTER PLUMBING & DRAINAGE SOLUTIONS FOR FUTURE READY SMART CITIES!

Since 1942
Supreme[®]
People who know plastics best
TOTAL PIPING SOLUTION



Download the App
Supreme Pipes
Available on Google Play and the App Store

Jeevan bhar ka saath...



Lifeline[®]
C-PVC Hot & Cold
Water System



**COMPLETE
WATER STORAGE
SOLUTION**



SKY RISE[®]
Hi-Tech, Low Noise,
S.W.R. Drainage system



Nu-Drain[™]
Underground Drainage
& Sewer System



SAFEGARD[®]
Septic Tanks



**AQUATIC
AQUAKRAFT**[™]
Bath Fittings

● Water Management ● Plumbing ● Drainage ● Sewerage

Explore supreme's exhaustive product range of more than 10,000 eco sensible green products & find a perfect match for your smart homes!

Salient Features: Widest range | Stronger and resilient | Excellent resistance to corrosion and chemical attacks | Perfect hydraulic properties | Simple and leak proof joints | Quick and convenient installation | Designed to last for more than 50 years | Maintenance free | Eco-friendly | Most cost effective.



Toll Free No. 1800-102-4707 91-22-4043 0000 www.supreme.co.in pvc-pipes@supreme.co.in

Spaces for Holistic Learning

Toy Blocks, a playschool in Ahmedabad designed by Blocher Partners India redefines the concepts of Architecture in Early Education.

In the dynamic landscape of education, the role of physical spaces cannot be underestimated, especially when it comes to early education. These formative years are crucial for a child's development, and the environment in which they learn plays a pivotal role in shaping their minds. As the education sector transforms, the integration of architectural concepts in early education spaces serves as an emerging trend that holds great promise.





One of the prominent Architecture and interior design firm Blocher Partners India headed by dynamic and multi-talented Ar. HartmutWurster, Principal Architect at Blocher Partners India has designed Toy Blocks, a playschool in Ahmedabad with a built-up area of 1,730 sq. m. offers various flexible learning zones for young learners to explore different activities.

After meticulous research and planning Ar. HartmutWurster conceptualized this concept. Explaining the concept in detail he says, "Early childhood education has gained recognition as a foundation for lifelong learning and development. These years, typically from birth to eight years old, are a period of rapid cognitive, emotional, and physical growth. The child's early experiences can provide either a strong or a fragile foundation for later learning, development and behaviours. Children are sponges for information, and their learning experiences during this stage can have a lasting impact. The architecture and design here can make a significant impact by exploring innovative concepts of various different methods of teaching like Montessori or Reggio Emilia to design spaces that can stimulate curiosity, creativity, and critical thinking while providing a sense of security and belonging.







Natural Light and Ventilation

Effective learning is closely tied to the quality of the learning environment and natural light and ventilation play a pivotal role in enhancing the atmosphere within the classroom. With diverse climates, ranging from scorching summers to monsoons, innovative architectural concepts are essential to optimise these natural resources while ensuring the comfort and concentration of young learners. Large windows, shading devices, and well-planned cross-ventilation can significantly contribute to a comfortable and productive learning space.

Outdoor Learning Spaces

Early education is not confined to the four walls of a classroom hence outdoor learning spaces in institutions are equally important. Educational architecture must prioritise the creation of outdoor learning areas where children can explore, learn about the environment, and develop an appreciation for the natural world. Designs should include outdoor classrooms, gardens or courtyards, and natural elements to develop a stronger connection to the environment while enjoying the advantages of outdoor learning.







Adaptable Learning Spaces

Embedded within the context, flexibility is key in educational spaces and it is essential to provide a variety of learning zones. Creating multi-purpose spaces that can be easily reconfigured for various activities, such as collaborative projects, arts and crafts, and quiet reading, allows educators to cater to the specific needs of their children.

Stimulating Visuals and Materials

Along with other parameters, the architecture of early education spaces should be designed to stimulate young minds that targets developing their senses. This involves the use of colour, texture, and the arrangement of educational materials. Incorporating vibrant colours, captivating murals, and attractive furniture can engage and inspire children. Additionally, spaces should be equipped with age-appropriate learning materials, fostering a sense of curiosity and exploration.

The architecture of early education spaces is a multidimensional endeavour that goes beyond aesthetics. It is about creating environments that inspire and nurture the next generation of leaders, thinkers, and innovators. Thoughtful architectural design that prioritises inclusivity and flexible learning zones can set the stage for a brighter future for young minds.



Minimalist Masterpiece



The small apartment in the heart of Mumbai, designed by Rajesh Patel of Architect Rajesh Patel is a perfect example of seamlessly blending simplicity, class, and modern design.

There is special elegance attributable to simplicity. It's a measure of luxury that one can't define, predict or force. This small apartment in Mumbai designed by Mumbai-based firm Architect Rajesh Patel, displays exactly that sort of minimal, unforced elegance, which is all the more impressive considering the apartment's urban surroundings. Ar. Rajesh Patel was approached by his clients to design their compact 850 sq. ft. home in the heart of the city - Girgaon Chowpaty, Mumbai. Though small in square footage, they wanted an airy, bright abode driven by a minimalist vocabulary. Designed for a senior citizen couple engaged in diamond industry, the team at Architect Rajesh Patel has crafted an inviting home with cosy proportions and subtle colours.

With Barch (hons) from M. S. University Of Baroda, Architect Rajesh Patel established his design studio in 1979. Since then, he has worked on various architectural and interior projects in particular corporate offices, educational institutes, laboratories, high-end villas and apartments. Explaining the clients brief, Rajesh Patel, Architect & Interior Consultant, Architect Rajesh Patelsays, "The clients who are senior citizens wanted a contemporary interior design, more open in look and feel, simple with artworks, soothing lighting, functional, non-cluttered and with ease of maintenance. They desired a design that would please their grandson. The project redefines the art of living by seamlessly integrating personal narratives into bespoke spaces that stand as living testaments to the enduring threads of our clients' lives.", he adds.

This soulful sanctuary emerges from clean lines, subtle intricacies, and a muted, neutral palette. Reflecting the essence of the client's philosophy, the space beautifully marries functionality with aesthetics. The entrance lends a welcoming tone with its subtle artwork. The team decided to make the living room the heart of the house. The space looks visually enlarged with mirror making for a comfortable yet intimate space for gatherings. The intimate living room features a grey sofa set, interesting lighting fixtures, artworks and glass coffee table, exuding comfort and sophistication. The dining area has been smartly centralized between living room and kitchen for easy service and is visually connected to all the spaces. The parallel kitchen creates a central passage to access guest room at the rear end of apartment.





Although the puja area faced space constraints, it has smartly been placed below the window in a standalone cabinet. The master bedroom has been placed in Vaastu compliant S-W corner of the apartment, with motorized LCD unit and super graphic on wall to bring in element of nature, while the twin-sharing guest bedroom is furnished with built-in wardrobe, with LCD unit and attached washrooms furnished with textured designer ceramic tiles. "The décor is informed by tasteful furniture and space-boosting tricks. The use of natural light in all the rooms was a prime consideration. Mirrors have been used in spaces where they can reflect maximum light. Unusual artefacts and artworks add to the look and feel of the home," informs Rajesh.

Though each room has a minimalistic design narrative, a material palette of understated hues creates a cohesive look. Overall a beige colour scheme with Italian marble flooring, veneer in dark polish, laminate, colourful artworks, custom-designed furniture pieces and a darker shade for the kitchen helps define the spaces. Combination of strip lighting and spots to highlight specific walls and artwork further illuminates the home. "Instead of POP for wall punning, we have made use of special plaster. This has a breathing quality when wet as it dries quickly without damaging the colour and, unlike POP, does not turn powder after drying. Also in spite of seasonal temperature, the material differential cracks are avoided", informs Rajesh.





Playing the balancing act between less and more left a pleasant aftertaste in the final plating. The unassuming simplicity that balances this home creates a feast for the eyes. The home is full of little details that break through the minimalist monotony and keeps the home feeling fresh and alive. "It's the sort of home designed on the adage that "less is more," but at the same time, also proves that it doesn't hurt to take a few risks sometimes", concludes Rajesh.

Material Box: ACP/Glass/Concrete:

Toughened glass, Sanitary ware/Fittings : Jaquar

Flooring : Italian marble

Furnishing : Bharat Furnishing

Furniture : Custom-made

Air Conditioning : Mitsubishi

Kitchen : Hacker

Lighting : Changi

Paint : Asian Paints

Art/Artifacts : Artist, Sculptor Mahesh Jagtap / Dinodia
Photo / Idea Creative

The Fusion of Vintage and Modern Aesthetics

Kunal and Khushboo Khandelwal's innovative approach creates a unique identity for this residence in Mumbai.



In the heart of Churchgate, Mumbai lies an architectural gem named The Layered House, a masterpiece designed by KunalKhandelwal and KhushbooKhandelwal, Partners and Principal Architects at Studio Design Inc. Spanning 2,000 square feet, this residence encapsulates a narrative of vintage charm interwoven with modern conveniences, offering a journey through time within its walls.

"The concept of layering is not just a design choice; it's a narrative. The intricate design philosophy seamlessly amalgamates vintage elements with modern aesthetics, creating a space where every artefact tells a story," says Kunal Khandelwal

The Layered House is a tribute to cherished memories, where art, light, textures, and accessories converge to create an ambiance that resonates with a distinct vintage modern flavor. The architects envisioned the concept of "layers" as a means to integrate both vintage and modern aesthetics. It was not merely about juxtaposing old and new; it was about crafting a narrative that pays homage to each element.

"We incorporated the element of storytelling into our design to do justice to the vintage pieces," explained Kunal. "Each item has its own unique narrative, and we began layering these narratives to create a sense of drama. Therefore, the layering of objects is actually synonymous with the layering of the entire space itself."

The meticulous selection of materials and textures played a pivotal role in manifesting the desired vintage modern look. The architects strategically opted for fluted teakwood panels, brick-face textured surfaces, and wood laminated floors to infuse character into the space.







"We aimed to give the space a strong and distinctive character—a hardshell—unlike the typical neutral interiors," Khushboo elaborated. "This shell served as a canvas, allowing us to carefully place different objects, ensuring that each found its rightful place in the narrative we were constructing."

A distinctive element in The Layered House is the dining table featuring an old ship wheel as its base, evoking curiosity and charm. "We found it by chance while looking for a dining table," shared Kunal. "We fell in love with it and decided we had to use it in some way."

The architects transformed this unexpected find into a unique statement piece, underscoring the house's ethos of celebrating diverse components from various eras and contexts.

The carefully curated color palette, including dark blue walls in the master bedroom and a layer of dense green throughout the house, emerged from the client's preferences and the desire to establish a cohesive narrative.

"In this narrative, the colour green emerged as a dominant theme, symbolizing the clients' love for plants," remarked Khushboo. "We meticulously incorporated small planters within the windows, infusing the space with dappled, forest-like light."

In terms of lighting, the architects employed a nuanced strategy, deviating from conventional uniform illumination. "We focused on creating deliberate shades and shadows," explained Kunal. "Vintage lamps sourced from various collectors' havens were used strategically to cast captivating shadows, enriching the layered atmosphere."





The Layered House is not merely a design project; it's a repository of stories waiting to be discovered. From repurposed artifacts to captivating elements sourced from historical contexts, each piece contributes to the larger narrative, enriching the space with character and history.

"Unlike traditional spaces, this project emerged as a collage of individual stories," said Khushboo. "We grappled with questions about placement and design, and this project evolved into a unique mosaic of interwoven narratives, each contributing to the overall charm of The Layered House."

The Layered House stands as a testament to the architects' ability to craft a harmonious blend of vintage and modern elements, transforming a space into a captivating journey through time. With an eclectic mix of artifacts and a keen eye for storytelling through design, Kunal Khandelwal and Khushboo Khandelwal have etched their mark in the world of architectural narratives.



This project, born out of countless conversations and a labor of love, serves as an inspiration—a testament to the power of design to evoke emotions, transcend eras, and weave tales within the walls of a space. The Layered House isn't just a residence; it's a living, breathing narrative waiting to unfold, inviting visitors to explore its rich tapestry of stories.



JALARAM
TIMBER DEPOT
EST. 1977

A Legacy of Trust

A commitment to the future

Established in 1977, we started with a simple mission - to preserve the quality and craft in harvesting the finest wood.

Our philosophy is that of trust, honesty and transparency which has enabled us to build a world-class veneer manufacturing unit in Kerala with over 400 varieties of veneers.

A future facing brand and market leader in solid surfaces, Jalaram Timber Depot was the first to introduce Corian® DupontSurface™ in India, among several other brands that we are proud to partner with.

Our 20,000 sq. ft showroom in Mumbai and our factory ensures that we have ready stock available for delivery at all times.

PARADOR
FINE GERMAN WOODEN FLOORING

CORIAN®
DESIGN
OFFICIAL DISTRIBUTOR

«DUPONT»
Montelli®

Rediscovering the Ancestral Charm

Anusmaranam - The Reminiscence” stands as a testament to studio TAB dedication to preserving heritage while infusing contemporary elements, breathing life into a century-old ancestral property.





Principal Architects Rahul Das Menon and Ojas Chaudhari. "Anusmaranam - The Reminiscence" stands as a testament to the architectural firm's dedication to preserving heritage while infusing contemporary elements, breathing life into a century-old ancestral property ravaged by the 2018 Kerala floods.

The journey embarked upon by studio TAB wasn't merely about reviving a home; it was a narrative curated to bridge the chasm between the past and present. The architects undertook a four-month-long endeavor, delving into the local craftsmanship and materials, ambling through the ancient Mattancherry market's alleys, and sourcing relics of woodwork from dilapidated houses. This concerted effort was pivotal in resurrecting the essence of the ancestral home, a place steeped in memories spanning four generations.

Adding insight on the design process Ojas Chaudhari said, "At its core, "Anusmaranam" is a symphony of past narratives interwoven with modern design elements. Salvaged teak from the old roof finds new life as resplendent ceiling planks, while a fallen mango tree, once a victim of calamity, metamorphoses into bespoke seating and a basin pedestal. Each refurbished element, from handmade tiles to heirloom furniture, finds its place harmoniously amid contemporary inserts, offering a seamless merger of eras."





The design ethos mirrors a sincere dedication to heritage and craftsmanship. Vernacular techniques take precedence - lime plaster, handcrafted with color pigments from local resources, graces the walls, while reclaimed woodwork echoes stories of antiquity, adding depth and character to the space.

Local artisans and craftsmen became essential collaborators, breathing life into the project with their expertise. Their contributions spanned diverse domains - from intricate woodwork joinery to hand-carved designs and the creation of bespoke local tiles, each element paying homage to the glory of bygone eras.









Challenges were confronted and conquered, particularly in restoring structural stability, a testament to the team's resilience and commitment to preserving the property's legacy. The journey wasn't without its share of discoveries; the ancient Mattancherry market emerged as a treasure trove, inspiring and enriching the project with its history and artifacts.

The house, now revived and rejuvenated, stands not just as a physical structure but as a vessel of cherished memories. With a palette curated to complement wood and brass textures, the color choices exude warmth and nostalgia, a canvas for the legacy that dwells within.

"As for the future, "Anusmaranam" aspires to be more than a restored ancestral home. It envisions itself as a keeper of tales, a space where future generations will find solace in their past, where childhood memories echo through corridors, and where each corner narrates stories of yore." says Rahul Menon.

Through "Anusmaranam - The Reminiscence," studio TAB has not just refurbished a home; they've rekindled the flames of history, creating a living testament to the seamless intertwining of time and memory.

Material Details:

Glass: Local and Asahi India Glass

Sanitaryware: Jaquar

Flooring: Indian stone, local handmade tiles, reclaimed tiles, and Athangudi tiles

Furnishing and Furniture: MagariFurniture

AC: Mitsubishi

Kitchen: Ebco

Lighting: Hybec and Local & Reclaimed lights

Paint: Locally made

21st
SOCIETY
INTERIORS
DESIGN COMPETITION
& AWARDS
2024

**CALLING ALL COLLEGES
OF ARCHITECTURE AND
INTERIOR DESIGN**

**THE BIGGEST BATTLEFIELD FOR
FUTURE INTERIOR DESIGNERS AND
ARCHITECTS IS HERE**

Participate in the most prestigious Society Interiors & Design Competition, running successfully for 21 years, and make your dreams come true.

Register now

Visit: societyinteriorsdesign.com/events



Fusing Style and Functionality



Ar. Sarabjit Singh has designed an exquisite Villa adorned with bespoke finishes, selective artworks, and an earthy material palette.



Sarabjit Singh the Founder and Architectural Designer at Villa Ortega, a multi-disciplinary boutique architecture and interior design firm based out of New Delhi has designed a refreshing new space with an international appeal. Located within the prestigious Sobha International City, a villa township situated in Sector 109 of Gurgaon, this stunning modern abode spans 8,000 sq. ft. across four levels and was meticulously designed by Villa Ortega. Adorned with custom finishes, captivating artworks, and an earthy material palette, the interiors of this residence exude a unique charm and sophistication.









The villa's design aimed to seamlessly blend tradition with modern comfort, offering a space that honors cultural roots while providing a contemporary living environment tailored to reflect the homeowners' style and preferences.

The architectural approach drew inspiration from the contemporary villas in the surrounding township, ensuring a harmonious integration with the existing architectural framework. The focus was on creating a design that effortlessly merged with its surroundings, with minimal structural challenges encountered during the process.

Interior design choices were influenced by art, fashion, and cultural elements, resulting in a cohesive theme that narrates individual stories within each space. A combination of textures, colours, and carefully curated artworks and sculptures brought together traditional and modern elements, defining the home's character.





Space optimization was achieved through the selection of slender furniture and smaller art pieces, maintaining an aesthetic appeal without clutter. Each room was designed with specific considerations to cater to the occupants' preferences, evoking distinct moods or atmospheres.

The villa's layout spans four levels, featuring a basement with recreational areas and a home theatre, a ground floor hosting formal living and guest areas, and subsequent floors accommodating bedrooms, family spaces, and recreational zones, ensuring both privacy and functionality throughout.

To maximize natural light and airflow, the design incorporated wall-length windows, balconies, and terraces, blurring the boundaries between indoor and outdoor spaces and fostering a seamless connection with nature.

Materials like marble and wooden flooring, veneer paneling, and brass detailing were meticulously chosen for construction and interior finishes, creating a visually dynamic and textured environment.

The color palette combined earthy tones with metallic accents in artwork and furnishings, enhancing depth and sophistication while evoking specific moods tailored to each room's atmosphere.

Furniture and décor sourced from VO Living were carefully selected to enhance the mood and functionality of each space, contributing to the overall design narrative.

While no specific smart home or automation features were mentioned in the design, the villa seamlessly integrates outdoor areas with the interior, creating an extension of the home within the natural surroundings.

The clients expressed their delight and excitement about living in a home that resonated with their style, appreciating the unified look that brought an exciting edge to their living experience. Their satisfaction was evident through the project's successful execution.

Carpet Couture

Lift your spirits and inject a splash of colour into your spaces with these aesthetically pleasing, warm and cosy carpets.



If you have read the Arabian Nights as a child, you would most likely recall several tales that had flying carpets. Part of Middle Eastern folklore and culture, carpets have today become a standard living room feature in Indian homes. The good thing about contemporary decor is that anything goes, and the same holds true for the carpets that are banging the trends right now. Experimentation is encouraged. Finding new styles, challenging the old ways of doing things, and not worrying about how the carpet will fit into the larger scheme of things, as mix and match is the mantra now.

To glam up your living room, it's not enough to just style the furniture. It is equally important to carefully style your floor as well. Comfort and practicality are the primary requirements for any living room design. The objective is to make the space feel warm and cosy, and carpets play a crucial role in achieving this goal. The most important advantage of living room carpets lies in the vast array of decorative possibilities they offer. With a diverse spectrum of colours and textures, carpets contribute not only to the visual appeal of the space but also to the tactile experience of comfort. New methods of making carpets have resulted in many new looks like swirls, bows, lattices, plaids, pin dots, layered colours, softer textures, and a variety of patterns. There's a lot on offer for people of all tastes and sensibilities. With an abundance of environmentally friendly, low maintenance and aesthetically pleasing options available, integrating a carpet into your living room becomes a seamless affair, complementing any chosen aesthetic.





Sharing insights on how carpets can help accentuate up your living spaces, Krsnaa Mehta, Founder and Design Director at India Circus by Krsnaa Mehta, a Godrej and Boyce Venture, says, "Carpets are not just functional pieces to cover floors; they are also versatile design elements that can profoundly influence the ambiance of your personal spaces. These textile treasures have the power to accentuate the aesthetics of your rooms, bringing a touch of warmth, luxury, and personality to your living spaces. Whether you choose a vibrant, patterned carpet to infuse a room with energy or a soft, muted rug to create a soothing, cozy atmosphere, the right carpet can tie your decor together."

Speaking about some of the key advantages that make carpets a popular choice for living areas, Hemil Parikh, Head Business Development, Febal Casa, says, "Carpets are far more than mere decorative additions to your home. These versatile furnishings come in a diverse range of colors, patterns, and styles, allowing you to make a design statement that resonates with your individual preferences and complements your existing furniture. Beyond their aesthetic appeal, carpets bring forth a host of practical advantages. Their beauty lies in their ability to seamlessly connect different areas within your home. Employing carpets with similar colours or styles establishes a visual continuity between one space to another and enhances the overall visual appeal, particularly in spaces with a neutral or minimalist decor."



There are plenty of ways to arrange your living room carpet in a manner that ties the whole room together. Black and white has always been one of our favourites – a perfect blend can work wonders for the colour balance of any room. Hence, it's virtually impossible to go wrong with monochrome carpets. When you're trying to make a statement, nothing works quite as effectively as a solid colour. Rugs that come in single colours can be used as accents to spruce up the glamour quotient of a space. Rich colours like red, wine and royal blue can be used to add pops of colour to rooms that have neutral palettes. Patterns add texture to the look and feel of a room. If most of the furniture and walls are in solid colours, geometric prints lend some texture to the interiors. Want to stay modern but still add a pop of fun? Your next option is playful carpets. Look for unique floral prints or abstract patterns with pops of colour.



Sharing about the wonders that carpets and rugs can do to spruce up your spaces, Deepankar Choudhary- Director, Hands, says, "Rugs add warmth and cosiness to a space and adding them to meticulously planned areas in the house can make the space look sumptuous and inviting. While a multi coloured rug can perk up your neutral furniture pieces, a muted rug can complement your sumptuous furniture. An heirloom carpet can elevate any corner and will be the conversation starter." Angelique Dhama, CEO, OBEETEE Carpets – Retail, further adds, "Carpets infuse warmth, elegance, and add a sense of individuality to your home. At Obeetee Carpets, we weave not just threads but masterpieces to add life to your home. We ensure that each of our rugs carries with it, a unique essence of your personal style." Sharing more tips on decorating your home with carpets, Swasti Shah Mehrotra, Founder of The Blue Knot says, "A carpet's versatility extends beyond mere floor covering – one can place it against a wall or suspend it from the ceiling for a unique, artistic touch. Even in situations where furniture choices may not be ideal, a carefully chosen carpet has the power to utterly transform the character of a space." "These woven wonders cushion your steps and wrap your surroundings in a cozy embrace, fostering a sense of belonging and serenity in your everyday life", concludes, Nishith Gupta, Managing Director, Sapana Carpet-Mats.







Badeloft's white freestanding bathtubs is made from a unique stone resin that combines all-natural limestone and marble, which adds to the high-quality look and feel. An acrylic polymer is applied to provide extra durability and an even longer-lasting sheen. In addition to its vibrant aesthetic, stone resin provides many benefits, namely high durability and heat retention. High heat retention results in more enjoyable bathing experiences and drastically reduces your water usage during bathing. Each of our soaking tubs is engineered to be a vibrant centerpiece in your bathroom for years to come.



15

A carpet or rug changes the look and feel of your home in an instant, giving definition, warmth, and colour. With these unique ideas, you can easily transform the way your living room appears. Whether you have traditional, mid-century modern, transitional, contemporary, or bohemian home décor— rugs and carpets are the best way to take the attention of your guests to your living room. So, what are you waiting for? There's a plethora of choices, with prices starting from a few thousands, going up to a lakh and more; be choosy and discerning when you buy, as it is something you'll own for a very long time.

Contact Details:

Image 1, 10, 11 Sapana Carpet-Mats - www.sapanacarpetsmats.com

Image 2, 6, 13 Febal Casa - www.febalcasa.com/en/stores/febal-casa-mumbai

Image 3 Hands - www.handscarpets.com

Image 4, 8, 15 Obeetee Carpets - www.obeetee.in

Image 5, 7, 14 The Blue Knot - www.theblueknot.com

Image 9, 12, 16, 17 India Circus by Krsnaa Mehta, a Godrej and Boyce venture. - www.indiacircus.com



16



17

Functional Material

**Ranjeet Sharma,
President
and CEO, 3A
Composites India
Private Limited
throws light on the
ever increasing
need to scout for
right materials for
fire prevention**

The incidences of fire break-outs are just rising. For instance, in a city like Mumbai, the recent fire incidences show that high-rise buildings are vulnerable to fire risks. According to BMC data, from 2008 to 2020, about 57,540 fire incidents happened, out of them, from 2008 to 2018, the total number of fire in High-rise Buildings were 1,518. Similar is a story for other cities or towns, as well.

This ever increasing concern calls for minimising fire risks, particularly in high-rise residential or commercial buildings, airports, railway stations or mass transit terminals, major sporting arenas, hospitals, schools and such other establishments. Globally, architects and developers are required to meet stringent regulations to design and build the structures and surrounding environments protective of fire hazards.

If we closely analyse the causes of fire, the usage of 'material' has always remained at the centre among various other reasons of fire incidences. According to the National Institute of Disaster Management (NIDM) Report on 'Fire in India: Learning Lessons for Urban Safety', the highly inflammable material had been the cause of major fire incidences across India and most of the fire outbreaks were worsened by the excessive use of such materials.



The best approach to prevent fires is to substitute or minimise the use of flammable materials, feel the experts. It then becomes imperative for the developers or the owners of the property to choose the right grade of building materials, which can minimize the damage to human lives and the structure in case of fire.

While choosing the right material, nowadays, the concept of 'fire retardancy' and the use of 'fire retardant material' plays a vital role. A fire retardant is a substance that is used to slow down or stop the spread of fire or reduce its intensity. This is commonly accomplished by chemical reactions that reduce the flammability of fuels or delay their combustion. Fire retardants may also cool the fuel through physical action or endothermic chemical reactions, thus reducing or eliminating the risk of serious damage to human life – which is of paramount importance.

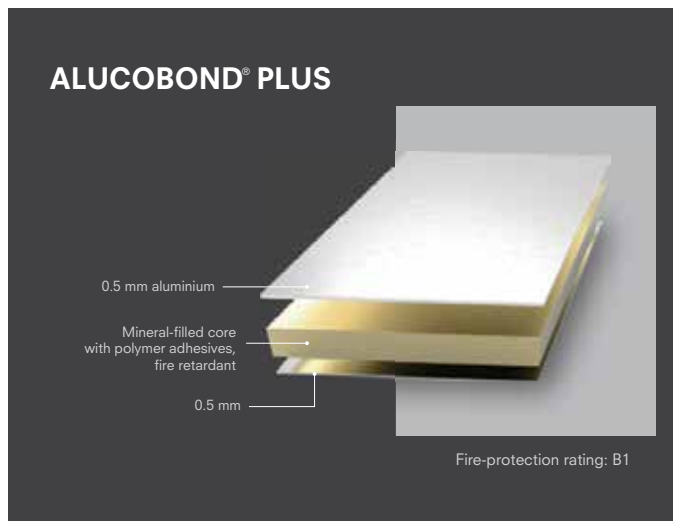
To ensure the same, using certified fire-retardant construction material is the need of the hour. There are many ways in which a fire retardant material can put out a fire, which will depend on the type of retardant used. On this scale, the right grade of Fire Retardant (FR) Aluminium Composite Materials (ACM) proves to be the best alternative to mitigate the risk caused by fire. The FR ACM uses 'Fire Retardant Core Material' with adequate thickness of the external aluminium sheets. Such FR ACM help in minimising the fire casualties and have fire – resistance rating of sufficient time that allows enough time for evacuation of people and properties. This material emits negligible or virtually no toxic gases, and it does not produce flaming droplets, both of which can be deleterious for building occupants

Therefore, the key is to choose the right testing standard method for evaluation of fire propagation characteristics of exterior wall assemblies containing fire retardant material such as NFPA 285. This test has to be backed by a product test such as EN 13501-1 to ensure the product in isolation of the system can also withstand fire as per the standards.

A 'true' Fire Retardant ACM should ideally have a non-combustible mineral core not less than 70%, an appropriate certification from a credible third party authority. More than ever, buildings of the future not only have to comply with the highest demands on design, they also have to meet the latest technical requirements such as sustainability, energy efficiency and most importantly - fire protection.

In regular ACMs, fire spreads upwards due to a combustible cladding, thereby contributing to a full scale mishap. Furthermore, fire breaks in and out through glass leading the flames to build up and break out smoke. On the other hand, a standardised Fire Retardant or Non-Combustible Cladding Material and Systems restricts the fire spread and stops droplets from falling down to avoid further spread and harm to people and property. It also restricts smoke and toxic fumes which is a major cause of death in case of a fire.

Branded ACP materials such as ALUCOBOND have set new standards for cladding material with certified and proven fire retardancy characteristics. The variant, ALUCOBOND PLUS which is fire retardant has minimum 70% non-combustible mineral filled core while ALUCOBOND A2 has 90% non-combustible mineral filled core. Such high performance materials are recommended in countries with most stringent fire regulations and have been time-tested since their inception for more than 40 years. Even the new colour range of ALUCOBOND Colourscapes, Concrete, Anodized Look and Grove are available in these fire retardant variants. Moreover, these also come with standard benefits and product properties of ALUCOBOND such as flatness, formability, resistance to weather and easy processing delivering brand promise. Such Fire Retardant materials prove to be the saviour in chronic fire situations to safeguard valuable assets and lives, thus justifying their raison d'être in the building material space.



Visually Appealing Design

Resaiki Interiors and Architecture Design Studio designs the office space for Krishi Rasayan Exports Pvt. Ltd., by seamlessly integrating vastu and colour theory to foster a positive workspace experience.

Krishi Rasayan Exports Pvt. Ltd.' new office is a 4000 sq. ft. space amidst a busy neighbourhood of Nehru Place, Delhi. The design of this office space which is a pioneering company in the field of agrochemicals is based on the principles of Vastu and colour theory to maximise and foster positive energies in a space. It also emphasizes Krishi Rasayan's commitment to revolutionising the agricultural sector. Krishi Rasayan's organizational mission is to bridge the gap and empower farmers to maximise their farm produce in quality and quantity. Their expertise lies in providing crop and soil care solutions, a domain they have excelled in since their inception in 1966.

The office embodies a thoughtful and cohesive design concept, integrating the brand identity seamlessly into the workspace. Explaining more about the design concept, Kuntal Vyas Aggarwal, Founder and Design Head, Resaiki Interiors and Architecture Design Studio says, "The office interiors are adorned with the brand's signature colours - red, yellow, and green, strategically used as highlights against a backdrop of dark greys and earthy tones. This blend creates an atmosphere that resonates with vibrancy and professionalism. The incorporation of these colours not only reflects the essence of the brand but also establishes a connection with 'Krishaj'." Moreover, the design team paid meticulous attention to the brand's name, emphasising the 'Rasayan' aspect by incorporating molecular combinations and hexagonal structures in the lighting and reception backdrop. The directors' preference for bold colours is evident in the choice of dark greys contrasted with light brown wooden tones, creating a striking and sophisticated ambiance. The incorporation of gold finishes adds a touch of masculinity, aligning with the directors' taste for grey, black, gold, and bold hues, resulting in a visually appealing and harmonious interior space.





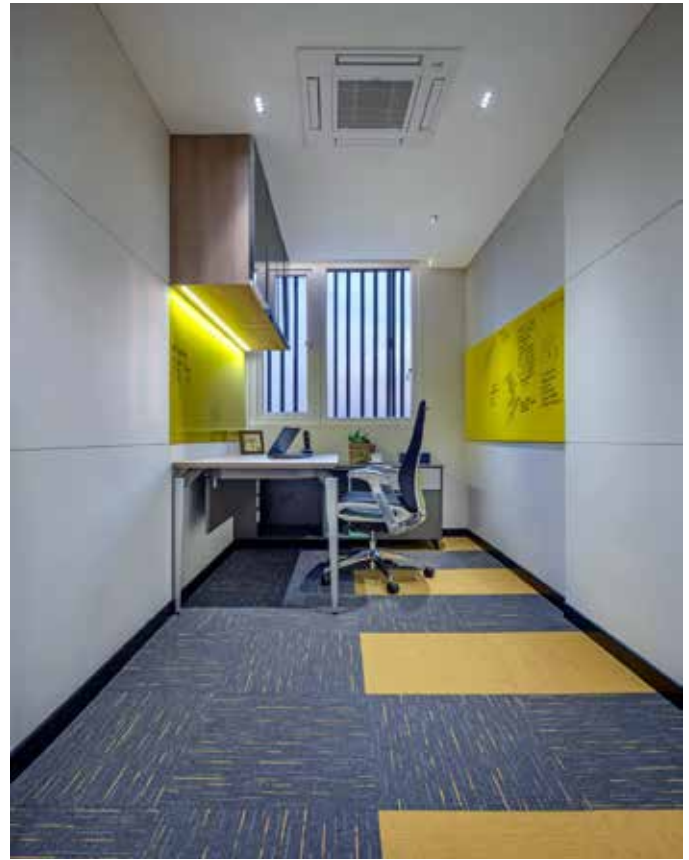
The corporate office is designed for efficiency and precision. Primarily operating in four cities, the head office serves as the central hub where strategic decisions are made. This office space is exclusively dedicated to the company's directors, with a total of four director cabins and their immediate executive assistants. Additionally, there are four cabins allocated for these executive assistants and four to six workstations for their subordinates. This well-structured layout ensures a seamless flow of communication and decision-making processes within the organisation. "As for the number of employees accommodated, the office primarily caters to the directors, their executive assistants, and their immediate subordinates, making it a compact yet highly functional workspace", informs Kuntal.

The design is meticulously crafted to meet both the functional needs of the employees and the company's operations. Beyond its aesthetic appeal, the office space is ingeniously planned to address practical challenges. "Situated on the tenth floor in a bustling neighbourhood, noise reduction was a priority. To counter this, the facade of the building incorporates double-glazed and triple-glazed insulated units, carefully evaluated to align with permissible decibel values. This ensures a tranquil work environment, shielding the employees from external disturbances", informs Kuntal. The design promotes flexibility by incorporating innovative elements such as 360-degree rotatable louvres between the director's cabin and the meeting room. This feature not only enhances visual connectivity but also allows for dynamic interaction and idea exchange, emphasising the importance of open communication and adaptability within the workspace. These considerations demonstrate a keen understanding of the functional needs of the employees and the company's operational requirements, ensuring a conducive and efficient work environment.



The meeting rooms are equipped with interactive features, including a world map illustrating the brand's extensive export network, marked with red spots denoting export locations. To ensure privacy, a baffle ceiling was incorporated above the glass facade, adding an extra layer of confidentiality for executives. Within the interiors, the ambiance is enhanced by strategically placed potted plants, creating a tranquil atmosphere conducive to work. The office layout includes a unique meeting space adjacent to a lunch area, where all directors gather to dine and engage in discussions. This multi-functional space serves as a waiting area for clients and visitors. The private offices are located after a designated passage area, separating them visually from the reception, meeting area, open workspace, and executive cabins. Furthermore, the office features various pockets designed for specific purposes. There's a dedicated meeting area within the main director's space, as well as a conference area and a premium waiting lounge that provides a separate, dignified space for visitors meeting the directors, ensuring their privacy and comfort.

Adding more insights on the materials, colour schemes, and architectural details, Kuntal says, "The predominant choice for floor tiles is a dark grey shade, providing a sleek and modern appearance. The partitions within the office are meticulously designed, featuring various materials such as PVD partitions, fluted partitions, and duco metal partitions, which add texture and visual interest to the space. Additionally, the use of a film in the office space serves both decorative and practical purposes.







TRAILBLAZE PAINTS

**Quality painting
that goes deeper
than the surface**

Experience the care and quality of Trailblaze Paints! We aim to build trust by making our clients and team members feel like part of the family. From our first conversation to the last small detail, we're here for you.

www.trailblazepaintsnc.com



Vastu has played a significant role in shaping the design of Krishi Rasayan's workstation, emphasising the importance of positive energies and harmony within the workplace. "The principles of Vastu and colour theory were thoughtfully integrated into the office design to create a space that maximises positive energies. In addition to the strategic use of colours and the positioning of cabin locations, a key aspect of Vastu implementation involved aligning all workstations and directors' spaces to face the northeast. This deliberate orientation is based on the belief that the northeast direction is associated with prosperity and positive vibrations, thereby enhancing the overall well-being and productivity of the occupants", informs Kuntal.

A key challenge during the design process was to merge the distinct ideologies of each brand director while ensuring innovation and effective brand communication remained central to the design. "One of the innovative solutions we applied was the careful integration of unique brand identities within the workspace. This involved incorporating elements that resonated with the agro company's core values and products, creating an environment that felt authentic to its mission", says Kuntal. Practical considerations, such as the use of durable and sustainable materials, were also integrated seamlessly, aligning with the agro company's ethos.

"Designing Krishi Rasayan's corporate office has been a fulfilling endeavour, capturing the very essence of the agro company's brand identity and values. The office space serves as a tangible representation of the company's ethos, blending functionality seamlessly with its core principles. Within these walls, a dynamic synergy between innovation and practicality prevails, fostering an environment where ideas flourish and the future of Indian agriculture is actively shaped. It has been a rewarding experience, bringing to life a workspace that not only reflects the essence of Krishi Rasayan but also serves as a hub where creativity and vision converge, paving the way for a vibrant and impactful future in the realm of agrochemicals", concludes Kuntal.

Product

Lifestyle

Luminous Range

Kaniry is about to turn up the heat in the home decor world with an electrifying new addition to its lineup through its Fire Pit and Lantern Collection. Kaniry's meticulously crafted range comprises intricately designed lanterns and fire pits that create an enchanting ambiance in your outdoor spaces. Their glow gold metal lantern collection dances to the tune of your heartbeats to designs that put the 'light' in delight, perfectly adding a hint of luxury to your abode. The sleek and minimalist design of their smokeless tabletop firepit will make a bold statement, a conversation starter, adding a dash of gaiety to your gatherings.

www.kaniryhomedecor.com



Vintage charm meets comfort

Nitin Kohli Home is a name synonymous with unparalleled design excellence and innovation in the realm of residential and commercial interiors. Their latest collection, replete with brass detailing adds a timeless vintage charm to homes. Side tables, chairs, pedestal lamp and benches, this range exudes a contemporary yet regal vibe combining functionality and aesthetics. A fine combination of different materials such as wood, metal and brass makes these unique statement pieces. Each product from this collection is crafted with utmost precision and will be a treasured addition to any household.

The elegant chair is the perfect example of minimalist design and elegance. It features clean lines, well-proportioned dimensions, and is made from top-notch materials, blending modern style with comfort. The sleek and timeless design of the side table makes it adaptable to various interior styles. The colonial-style pedestal lamp features a wooden base that adds a touch of vintage charm to your space. The handcrafted bench, made with natural wood, is a truly unique piece of furniture.

www.nitinkohlihome.com



Midas Touch

Peggy Oliver's opulent Gold-plated tea set is crafted from high-quality Sri Lankan porcelain, skillfully produced using cutting-edge Japanese technology. Imbued with a scratch-proof surface and devoid of lead and carmine, this set is an epitome of quality and safety. Adorned with real gold lining and coloured with non-toxic hues, this premium collection embodies the essence of International style and elegance. It comes with an exquisite packaging which makes it ideal as a gifting option this festival season. This distinguished set comprises 6 cups, 6 saucers, 1 tea pot, 1 tea pot lid, 1 sugar pot, 1 sugar pot lid and 1 Milk pot ensuring a complete and elegant tea-serving experience.

www.peggy-oliver.com



Scintillating Range

The Array Gold by Shaze is something that we all need! The glassware shaped in the form of a trichotomy, finds a place among flowing metal to contain all the components that make up the delicious dish, whereby the platter's glassware is moulded to make serving easier. The beaker's triangle opening makes it easier to pour the sauces into the pre-filled puris, and its larger base adds durability. The PVD finish and food-grade stainless steel, which are crafted with indents for each serving bowl, are highly reflecting due to their high sheen. The spoon replicates this finish by having the ideal width, angle, and curve to make it easy to bite into each serving. To serve the luscious treat, the variety comes with a tall beaker, two small bowls, a large bowl, and an ergonomic spoon.



www.shaze.in



Exquisite Offering

Renowned Czech luminary powerhouse, Sans Souci, celebrated for crafting bespoke ornamental illuminating apparatus, glass artifacts, and architectural elements for ventures spanning the globe has unveiled their latest RAW collection. This collection goes beyond mere design and seeks to encapsulate the essence of glassmaking at its very inception. Each component within the collection is a testament to the glassmaker's artistry, with every piece exuding a distinct, bold, and unparalleled character. The RAW collection represents a remarkable endeavour to preserve the raw, untouched beauty of glass as it emerges from the fiery furnace. What truly sets the collection apart is its versatility. These glass pieces can be finished in a spectrum of hues, including crystal, soda, and gold mica. This broad palette of colours offers homeowners the opportunity to imbue their interiors with depth and exquisite detailing, allowing for a harmonious integration with diverse design themes and colour schemes.

www.sanssoucilighting.com



SEAATS

ADAPTABLE FURNITURE SOLUTIONS



WE LOOK FIRST AT CLIENT OBJECTIVES AND THEN TAILOR FURNITURE SELECTIONS TO MEET DESIGN, STYLE, PRICING, AND TIMELINE SPECIFICATIONS. WE WORK WITH CLIENTS IN A VARIETY OF INDUSTRIES AND WITH VARYING DESIGN GOALS AND SPACE PLANNING CONSIDERATIONS.

SELECTING THE RIGHT OFFICE FURNITURE REQUIRES JUST THE RIGHT BALANCE OF DESIGN, SPACE PLANNING AND PROJECT MANAGEMENT EXPERTISE.

WWW.SEAATS.COM

Innovative Masterpiece

Cassina, with a dedication to research and innovation, seamlessly combines technology with time-honored artisan craftsmanship. Available in the Indian market through Etrelux, the Ghost Wall, a creation by Danish designer Mikal Harrsen, marks the brand's debut masterpiece. This visionary wall unit redefines interior design and elevates living spaces with its adaptable system of decorative panels and complementary accessories. Ghost Wall is a thoughtfully designed system of decorative panels that promises to enhance every corner of your home, from the entrance to the bedroom. With an extensive range of accessories and an exceptional variety of textures and colors, Ghost Wall encourages endless possibilities for creating unique arrangements and inspiring creative interpretations of its use. What distinguishes Ghost Wall is its forward-thinking character, exemplified by the slim profile of the panels and supports. This design feature allows the structure to seamlessly merge with your walls, effectively transforming them into dynamic works of art. Available in different sizes and materials, including wood, glass, and fabric, Ghost Wall introduces a fresh perspective to interior design.

info@etreluxeindia.com



Miscellaneous



Aesthetic Lights

This festive season, consider enhancing your home's ambiance with the timeless charm of REMOLE Wooden Lights. These fixtures are more than just sources of illumination; they are exquisite works of art crafted from reclaimed teak wood, adding an elegant and rustic charm to your living spaces. Opting for REMOLE Wooden Lights isn't just about beauty; it's a choice for sustainability. Crafted from reclaimed teak wood, these fixtures offer eco-friendly illumination, bringing natural warmth into your home while reducing your carbon footprint.

www.remole.in

**SIMON
SILVER**
DESIGNS

HEIRLOOM QUALITY FURNITURE

Our life goal is to respect and practice the art of salvaging trees and transforming them into fine hardwood tables, and furniture in the most organic way possible. Each slab of wood that becomes a table can be traced back to an exact location, and reason for being felled, be it by natural causes, due to tree sickness, or danger to a nearby home.

www.simonsilverdesigns.com



Marvellous Speakers

Creative Newtech (NSE: Creative), India's foremost brand licensee and market entry specialist, today announced its partnership with Ruark, UK's premium Audio brand, which will see them available in India. The R2 Deluxe Bluetooth Radio offers class leading sound with adaptive EQ DAB, DAB+ and FM tuner, High quality Bluetooth receiver, High contrast OLED display with auto-dimming, RotoDial control system and NS+ driver and adaptive equaliser. The MR1 BLUETOOTH SPEAKER SYSTEM offers features like Linear Class A-B amplifier, aptX Bluetooth Receiver, 3.5mm line input, Digital optical input and RCA subwoofer output, while the R3S WIRELESS MUSIC SYSTEM is Compact in design but offers expansive sound. It also offers High-fidelity two-channel Class A-B amplifier system, High contrast OLED display, SmartRadio DAB/DAB+/FM, Works with Spotify, Deezer, Tidal, and Amazon Music, Multi-format CD Player, aptX Bluetooth Receiver, USB-C playback and charge port, Auxiliary inputs, Optical and analogue inputs and Wi-Fi capability.



www.creativenewtech.com



Perfect Handles

The New Oaplus Series of Designer Lever Handles by Hafele derives its name from the Sanskrit word 'Upal' which means 'precious stone' and is exquisitely crafted to impeccably embellish your contemporary architectural doors. Made up of high-quality brass, these lever handles are available in anthracite, antique brass matt, nickel matt, black matt and rose gold finishes, offering you maximum flexibility and choice while designing your interior. Further guaranteeing you a peace of mind are the 5 years' of functional warranty and a robust cycle testing of 1,00,000 cycles as per EN 1906 standards, giving you a hassle-free experience.

www.hafeleindia.com/en

Italian Finesse

Febal Casa, the renowned, premium Italian brand by Colombini Group, recently launched its first mono-brand store in India at Creaticity, Pune. The grand opening of the store marks a significant milestone in Febal Casa's foray into the Indian market. The premium product range on display includes modular kitchens and wardrobes, sofas, beds, dining and occasional furniture, accentuated by home décor and furnishings too. The Febal Casa store promises an exciting and exclusive experience for those seeking distinctive, Italian-inspired home furnishings and decor.

www.febalcasa.com



Functional Range

H & R Johnson (India) has tied up with Monaco based Siamp, who are leaders in concealed cisterns, to launch the new blow-moulded single-piece concealed cisterns in India. The new concealed cistern is launched under the premium offering, Johnson Elite range. Known for its trouble-free functioning, Siamp's concealed cisterns, under Johnson Elite brand, offers three different design options of flush plates to the consumers. The concealed cistern is priced at Rs. 5,650 and flush knobs are priced at Rs. 1,850.

www.hrjohnsonindia.com



Natural Beauty

Beyond Dreams is delighted to introduce its bespoke Kuruka 2.0 fabric collection, which is designed to infuse your home with the heartbeat of the wild. The collection pays incredible homage to the untamed beauty, the vibrant culture, and the fierce wildlife of the Masai Mara. Co-founders of Beyond Dreams, Akshay and Avani Khurana, continue to channelise their shared love for Masai Mara through the collection. Be it the patterns that mimic the authentic tribal war scene of Africa or colours that evoke the vibrant Masai people's heritage, these fabrics serve as the perfect eye candy for your culture-enthusiast soul. Exuding an amalgamation of earthy and muted tones, their vast variety of textile goes perfectly well with Kuruka's sculpted lounge chairs and abstract couches, emanating African wilderness with each yard while harmoniously blending contemporary design and ancient traditions of Masai Mara.

www.instagram.com/beyondreams.in

***You look glamorous
for a reason...***



**MRJ TRADING PVT LTD.F/201, Shyamkamal C Bldg, Wing 1
Agarwal Market, Vile Parle East.Mumbai - 400057, India.**

Contact : +91 98200 68118 | app.tislaminates.in



GRAAND PRIX
Home Elevators & Pools



Lifting up your spirits and your standards!

Graand Prix offers high-end, luxury elevator solutions and relaxing, aesthetic swimming pools crafted to give you a blissful experience.



Customized products



Premium quality



Cutting edge technology

Contact Now

+91-808 080 8785

Graand Prix, 407, Flying Colors, Pt. Deendayal Upadhyay Marg, Mulund (W), Mumbai - 400080.

www.graandprix.com